

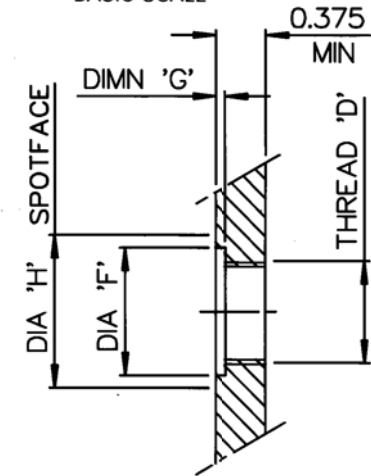
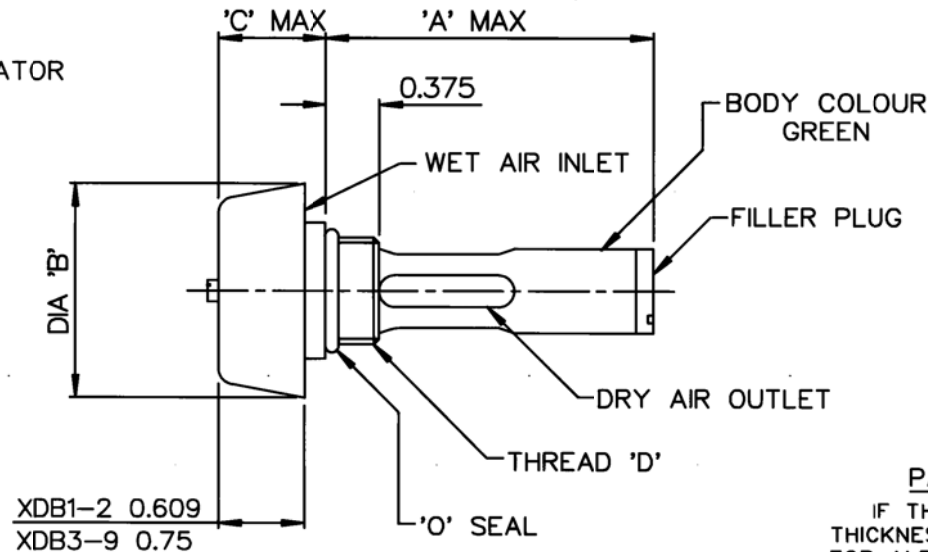
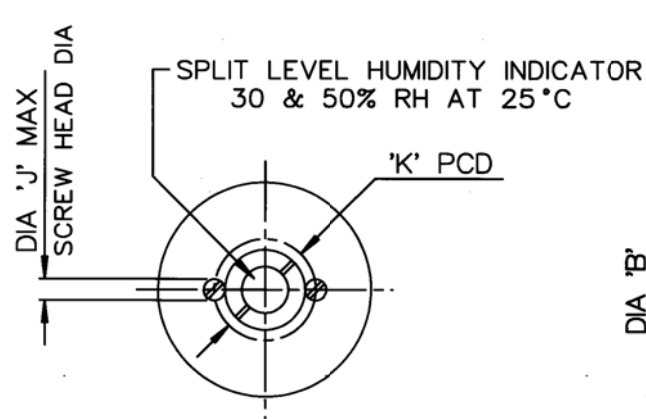
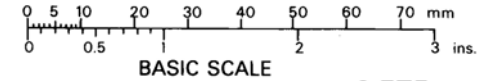
DRG. No. SHT 1 OF 2
BL/D 1462/1-9 INST

USED ON

REMOVE ALL SHARP EDGES UNLESS SPECIFIED.

THIRD ANGLE PROJECTION

DO NOT SCALE - ASK.



PANEL MOUNTING DETAILS

IF THE PANEL IS OF INSUFFICIENT THICKNESS SEE DEF STAN 44-2 PART 1 FOR ALTERNATIVE METHOD OF MOUNTING

XDB1-2 0.609
XDB3-9 0.75

DRG No	NSN	STYLE	'A' MAX	DIA 'B'	'C' MAX	THREAD 'D'	NOMINAL CONTENTS	DIA 'F'	DIMN 'G'	DIA 'H'	DIA 'J' MAX	'K' PCD
BL/D1462/1	4440-99-015-1401	XDB1	2.407	1.50	0.766	0.75 UNEF	5 GRM	0.937	0.074	1.125	0.158	0.750
BL/D1462/2	4440-99-015-1402	XDB2	4.407	1.50	0.766	0.75 UNEF	10 GRM	0.937	0.074	1.125	0.158	0.750
BL/D1462/3	4440-99-015-1403	XDB3	2.094	2.187	1.016	1.25x20 UN	20 GRM	1.450	0.074	1.625	0.194	1.125
BL/D1462/4	4440-99-015-1404	XDB4	4.094	2.187	1.016	1.25x20 UN	40 GRM	1.450	0.074	1.625	0.194	1.125
BL/D1462/5	4440-99-015-1405	XDB5	4.032	2.437	1.016	1.5x20 UN	60 GRM	N.A.	N.A.	2.00	0.194	1.600
BL/D1462/6	4440-99-015-1406	XDB6	7.532	2.437	1.016	1.5x20 UN	100 GRM	N.A.	N.A.	2.00	0.194	1.600
BL/D1462/7	4440-99-015-1407	XDB7	8.532	3.00	1.016	2.0x20 UN	200 GRM	N.A.	N.A.	2.50	0.252	1.750
BL/D1462/8	4440-99-015-1408	XDB8	12.532	3.00	1.016	2.0x20 UN	300 GRM	N.A.	N.A.	2.50	0.252	1.750
BL/D1462/9	4440-99-015-1409	XDB9	13.532	3.50	1.016	2.25x20 UN	400 GRM	N.A.	N.A.	3.00	0.252	2.000

NOTES

- FILLED WITH BEADED SILICA GEL DESICCANT, SPEC. TS10208.
- CONFORMS TO DEF STAN 44-2.
- PACKAGED FOR A SHELF LIFE OF 5 YEARS WHEN STORED IN TEMPERATE CONDITIONS.
- SEE SHEET 2 FOR BL/D1462/10-18 (XDB1-9MS).

REDRAWN	4076	18	4/3/92
CHANGE	MOD. No.	ISSUE	DATE

MATERIAL ALUM ALLOY	PROTECTIVE TREATMENT ANODISED	TOLERANCES UNLESS STATED ±0.015	BROWNELL LTD. LONDON, N.W.10.	CUSTOMERS REF.	DRAWN LJ	CHECKED K
EST. WT. -		DIMNS. IN INCH/mm SCALE (ORIGINAL) N.T.S	TITLE DESICCANT CONTAINER DEHUMIDIFIER (BREATHING TUBE)	DRAWING No. SHT 1 OF 2 SHTS BL/D 1462/1-9 INST		

THIS DESIGN IS THE PROPERTY OF BROWNELL LTD. AND MAY NOT BE COPIED OR REPRODUCED WITHOUT THEIR PRIOR WRITTEN PERMISSION.