

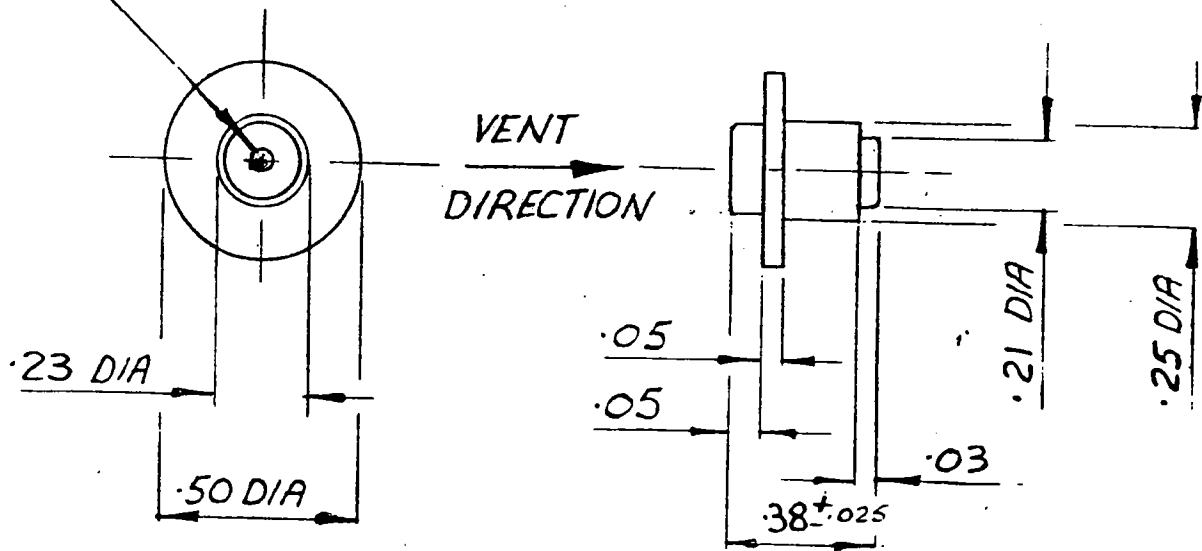
DRG No.

BL/D 3560 INST

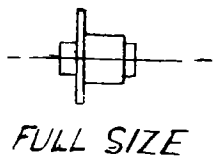
THIRD ANGLE
PROJECTION

USED ON

STAINLESS STEEL FILTER
400 MESH EACH END



OPENS BETWEEN 1 & 2 P.S.I.
RESEATS 1/2 P.S.I BELOW OPENING
PRESSURE.



THIS DESIGN IS THE PROPERTY OF BROWNELL LTD.
AND MAY NOT BE COPIED OR REPRODUCED
WITHOUT THEIR PRIOR WRITTEN PERMISSION.

MATERIAL ALUM. ALLOY	PROTECTIVE FINISH ANODISED				
EST. WT. —				1	5.11.81
DIMNS IN INS	SURFACE ROUGH	CHANGE	MOD. No.	ISSUE	DATE
SCALE 2:1	—	TOLERANCES ±0.010			
BROWNELL LIMITED LONDON N.W.10.			DRAWN	CHKD.	
SUB CONT.		SUB CONT. DRG. REF.			
TITLE RELIEF VALVE		DRAWING No. BL/D 3560 INST			