

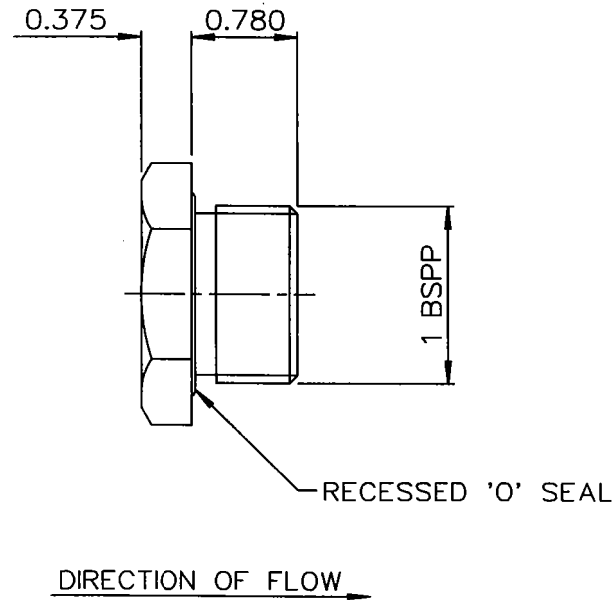
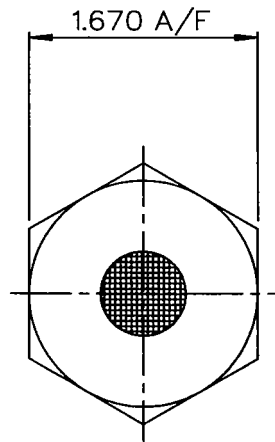
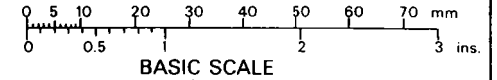
THIS DESIGN IS THE PROPERTY OF BROWNELL LTD. AND MAY NOT BE COPIED OR REPRODUCED WITHOUT THEIR PRIOR WRITTEN PERMISSION.

DRG. No.
BL/D 6076 INST
USED ON

THIRD ANGLE PROJECTION

REMOVE ALL SHARP EDGES UNLESS SPECIFIED.

DO NOT SCALE - ASK.



OPENING PRESSURE: 1 - 2" Wg

		A	28/9/92
CHANGE	MOD. No.	ISSUE	DATE

MATERIAL STAINLESS STEEL 316S16	PROTECTIVE TREATMENT —	TOLERANCES UNLESS STATED	±0.032	BROWNELL LTD. LONDON, N.W.10.	CUSTOMERS REF.	DRAWN	CHECKED
		DIMNS. IN INS/ mm				IJ	JK
EST. WT. —		SCALE (ORIGINAL)	1 : 1	TITLE RELIEF VALVE (INWARD)	DRAWING No. BL/D 6076 INST		