

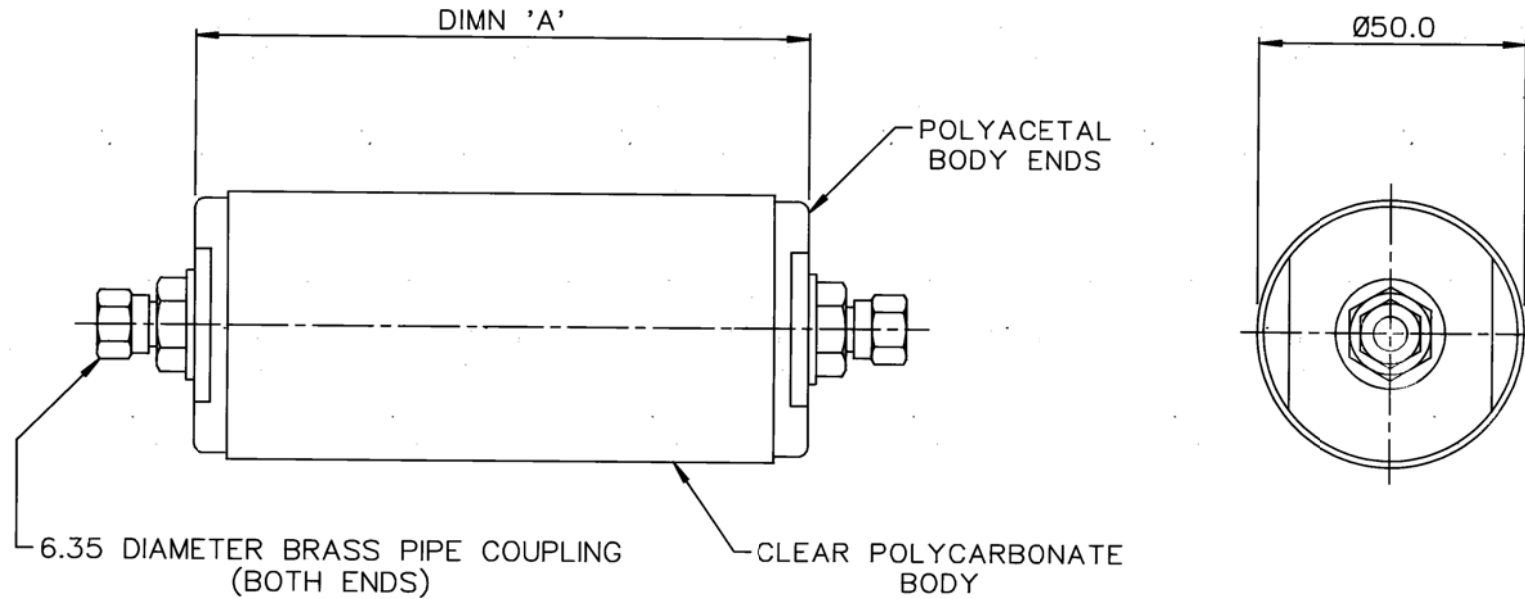
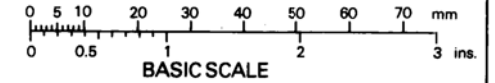
THIS DESIGN IS THE PROPERTY OF BROWNELL LTD. AND MAY NOT BE COPIED OR REPRODUCED WITHOUT THEIR PRIOR WRITTEN PERMISSION.

DRG. No.
BL/D 6927/01-05 INST
USED ON

THIRD ANGLE PROJECTION

REMOVE ALL SHARP EDGES UNLESS SPECIFIED

DO NOT SCALE - ASK



DRG No	DIMN 'A'	NOMINAL DESICCANT CAPACITY
BL/D6927/01	85.0	60 GRM
BL/D6927/02	115.0	100 GRM
BL/D6927/03	215.0	200 GRM
BL/D6927/04	300.0	300 GRM
BL/D6927/05	165.0	150 GRM

NOTES

1. CONTAINS INDICATING BEADED SILICA GEL DESICCANT.
2. MAXIMUM WORKING PRESSURE: 20 PSI.
3. OUTLET FILTER: 25 MICRON (NOMINAL).
4. CONFORMS TO PRODUCT SPECIFICATION REF M.
5. PIPELINE DRYER TO BE SUPPLIED WITH PVC TUBING (1.5 METRE LONG) & TUBE INSERTS.

1.5M LG TUBING WAS 1M	4777	D	20/9/95
TUBING ADDED (NOTE 5)	4625	C	9/1/95
/04 & 05 ADDED	4496	B	8/6/94
		A	13/4/94
CHANGE	MOD. No.	ISSUE	DATE

MATERIAL AS STATED	PROTECTIVE TREATMENT —	TOLERANCES UNLESS STATED ±1.0	DIMNS. IN mm/m.m. SCALE (ORIGINAL) 1 : 1
EST. WT. —			

BROWNELL LTD. LONDON, N.W.10.

TITLE

PIPELINE DRYER

CUSTOMERS REF.	DRAWN LJ	CHECKED JK
----------------	-------------	---------------

DRAWING No.
BL/D 6927/01-05 INST